



# RS-390/395SM

OUTPUT: APPROX 1.0~55W

Carbon Brush Motors

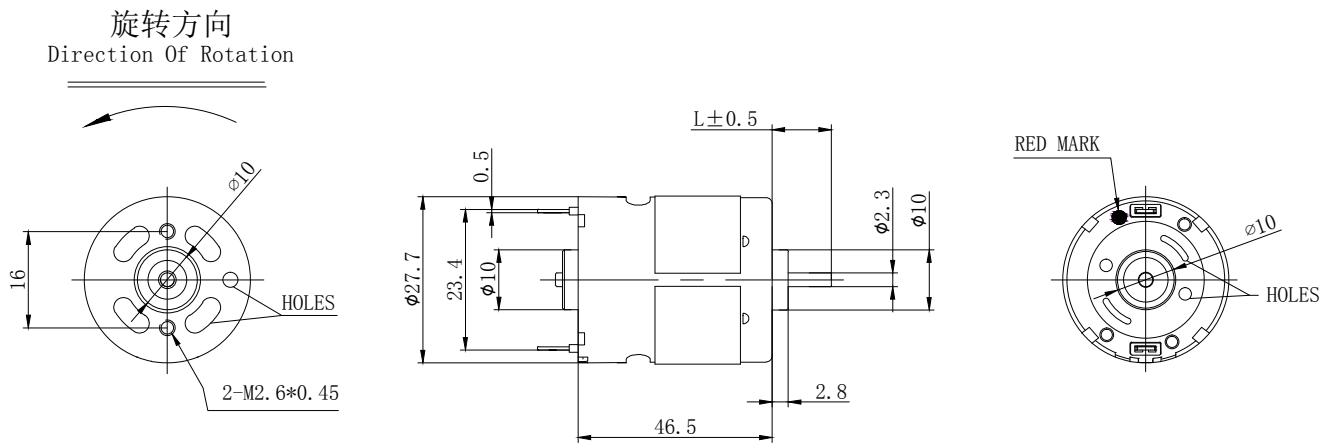
代表的用途: 家用电器、泵  
自行车电装机器

Typical Applications/Household Appliances  
Automotive Products



MODEL	VOLTAGE		NO LOAD		AT MAXIMUM EFFICIENCY				STALL	
	OPERATING RANGE	NOMINAL	SPEED r/min	CURRENT A	SPEED r/min	CURRENT A	TORQUE g. cm	OUTPUT W	TORQUE g. cm	CURRENT A
RS-395SM-2056	6-14V	12.0V	7500	0.13	6375	0.708	85	5.54	565	3.9
RS-390SM-23144	8-16V	14.0V	8000	0.14	6640	0.711	102	6.95	600	3.5

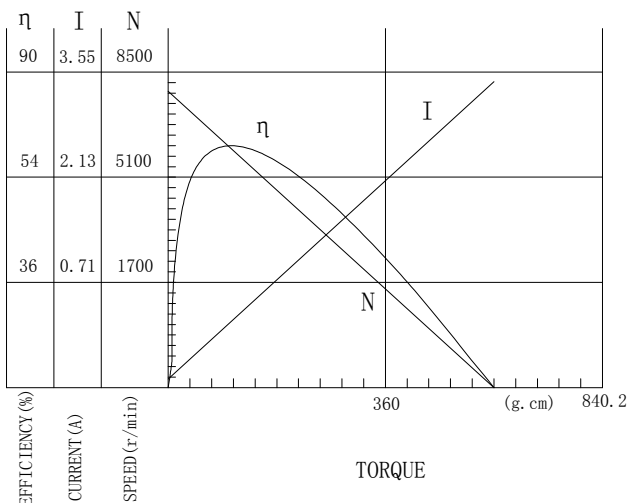
UNIT: MILLIMETERS



WEIGHT: 80g (APPROX)

RS-395SM-2056

12V



RS-390SM-23144

14V

