



RF/RK-020CH/SH

OUTPUT: APPROX 0.1~4.5W

Precious metal/Carbon-brush motors

代表的用途: 机器人、无线电控模型

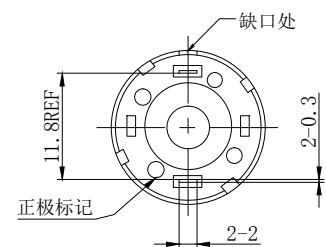
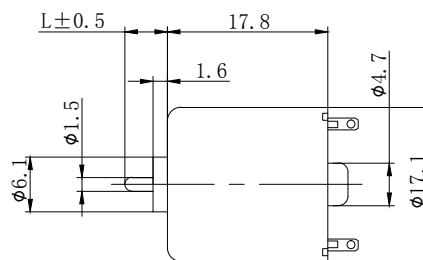
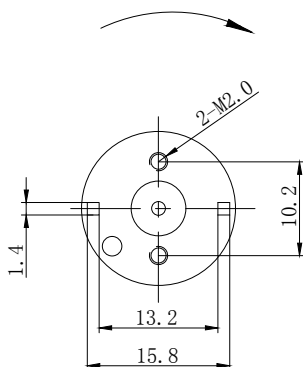
Robot Wireless electric control model



MODEL	VOLTAGE		NO LOAD		AT MAXIMUM EFFICIENCY				STALL	
	OPERATING RANGE	NOMINAL	SPEED	CURRENT	SPEED	CURRENT	TORQUE	OUTPUT	TORQUE	CURRENT
			r/min	A	r/min	A	mN.m	W	g.cm	A
RK-020SH-15200	6-9V	7.4V	16000	0.093	13129	0.43	1.47	1.9	84	2.0
RF-020CH-14215	2-6V	4.5V	11315	0.060	8961	0.228	0.336	0.30	16	0.869

UNIT: MILLIMETERS

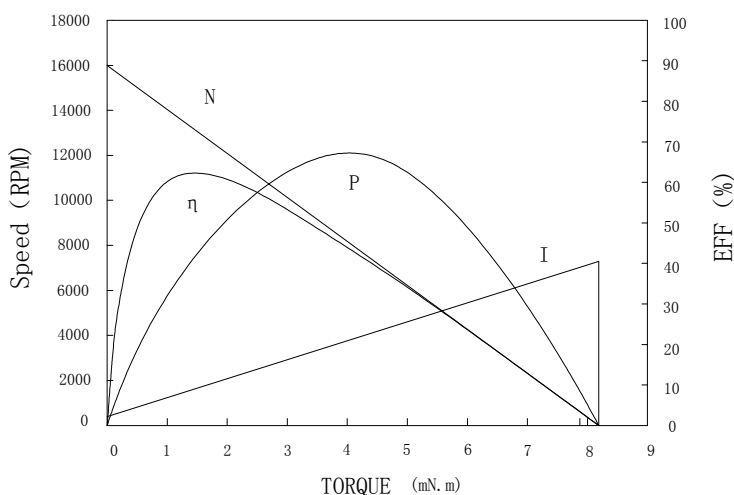
旋转方向
Direction Of Rotation



WEIGHT: 15g (APPROX)

RK-020SH-15200

7.4V



At No Load

Speed: 15968 RPM
Current: 0.093 AMPS

At stall (Extrapolated)

Torque: 8.26 mN.m
Current: 1.989 AMPS

At maximum efficiency

Efficiency: 61.4 %
Torque: 1.468 mN.m
Speed: 13129 RPM
Current: 0.430 AMPS
Output: 1.96 Watts

At maximum Power output

Output: 3.343 Watts
Torque: 4.129 mN.m
Speed: 8767 RPM
Current: 0.95 AMPS

Characteristics

Torque constant K_t : 4.356 mN.m/APM
E. M. F. constant E_c : 4.356 mV/rad/sec
Dynamic resistance: 3.7206 Ohms
Motor regulation M_r : 1933.66 RPM/mN.m