



RF-310/330TA

OUTPUT: APPROX 0.01~0.5W

Precious metal/Carbon-brush motors

代表的用途: VCD机芯、电动阀门、
手摇充电器、喷香机、

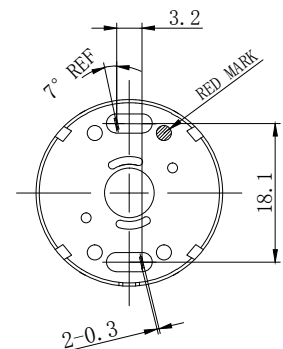
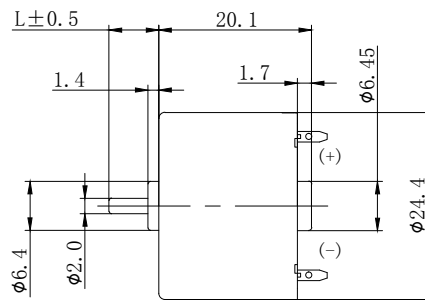
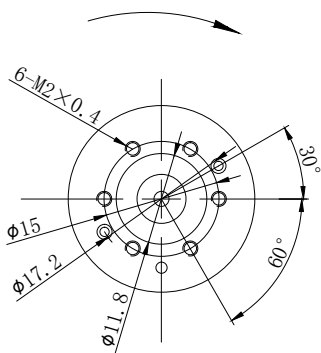
VCD movement Electric valve
Hand charger Aerosol dispenser



MODEL	VOLTAGE		NO LOAD		AT MAXIMUM EFFICIENCY				STALL	
	OPERATING RANGE	NOMINAL	SPEED	CURRENT	SPEED	CURRENT	TORQUE	OUTPUT	TORQUE	CURRENT
			r/min	A	r/min	A	mN.m	W	g.cm	A
RF-310TA-11400	1-4V	2.5V	2800	0.015	2267	0.06	0.33	0.08	16.5	0.238
RF-330TA-07800	2-4V	3.0V	1300	0.007	934	0.018	0.26	0.02	9.6	0.053

UNIT: MILLIMETERS

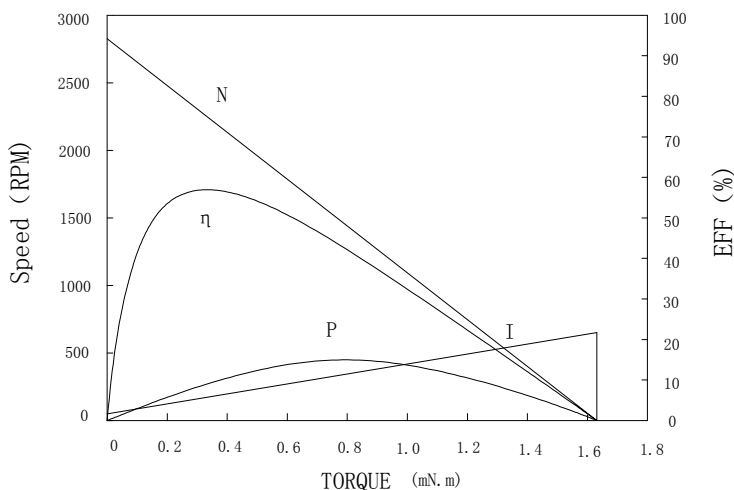
旋转方向
Direction Of Rotation



WEIGHT: 25g (APPROX)

RF-310TA-11400

3.0V



At No Load

Speed: 2835 RPM
Current: 0.015 AMPS

At stall (Extrapolated)

Torque: 1.62 mN.m
Current: 0.238 AMPS

At maximum efficiency

Efficiency: 56.1 %
Torque: 0.325 mN.m
Speed: 2367 RPM
Current: 0.060 AMPS
Output: 0.08 Watts

At maximum Power output

Output: 0.131 Watts
Torque: 0.811 mN.m
Speed: 1608 RPM
Current: 0.11 AMPS

Characteristics

Torque constant K_t : 7.259 mN.m/APM
E. M. F. constant E_c : 7.259 mV/rad/sec
Dynamic resistance: 10.4827 Ohms
Motor regulation M_r : 1747.44 RPM/mN.m